



AU, RTAS, and VST plug-in  
Version 2.0 for Windows XP and Vista  
and Mac OS X

Submersible Music  
505 Fifth Avenue South, Suite 900  
505 Union Station  
Seattle, WA 98104  
[www.submersiblemusic.com](http://www.submersiblemusic.com)

## Copyright

© 2008 Submersible Music Inc. All rights reserved. This guide may not be reproduced or transmitted in whole or in part in any form or by any means without the prior written consent of Submersible Music Inc.

KitCore™, DrumCore®, and Gabrielizer™ are trademarks or registered trademarks of Submersible Music Inc. All other trademarks found herein are the property of their respective owners.

Pentium is a registered trademark of Intel Corporation.

AMD and Athlon are trademarks of Advanced Micro Devices, Inc.

Windows and DirectSound are registered trademarks of Microsoft Corporation in the United States and other countries.

Mac, Power Mac, PowerBook, MacBook, and the Mac and Audio Units logos are trademarks of Apple Computer, Inc., registered in the U.S. and other countries.

ACID, ACID Music Studio, and ACID Pro are trademarks or registered trademarks of Madison Media Software, Inc., a subsidiary of Sony Corporation of America or its affiliates in the United States and other countries.

Digital Performer is a registered trademark of Mark of the Unicorn, Inc.

Fruityloops is a registered trademark of Image Line Buba.

Logic and Garageband are trademarks of Apple Computer, Inc.

Nuendo and Cubase are registered trademarks of Steinberg Media Technologies GmbH.

Pro Tools is a registered trademark of Avid Technology, Inc.

Samplitude is a registered trademark of Magix AG.

Sonar is a registered trademark of Twelve Tone Systems, Inc.

ASIO is a trademark of Steinberg Soft- und Hardware GmbH.

ReWire™ and REX™ by Propellerhead, © Propellerhead Software AB.

All trademarks contained herein are the property of their respective owners.

All features and specifications of this guide or the DrumCore product are subject to change without notice.

# Table of Contents

---

|  |    |
|--|----|
| <b>Chapter 1: Introduction</b> .....                   | 1  |
| System Requirements .....                              | 1  |
| Register KitCore .....                                 | 2  |
| Conventions Used in This Guide .....                   | 2  |
| <br>   |    |
| <b>Chapter 2: Installation and Configuration</b> ..... | 3  |
| Installing KitCore .....                               | 3  |
| Authorizing KitCore .....                              | 4  |
| <br>   |    |
| <b>Chapter 3: Using KitCore</b> .....                  | 7  |
| KitCore Plug-in Window .....                           | 7  |
| Playing KitCore .....                                  | 8  |
| KitCore Pads .....                                     | 8  |
| Saving Kits as Presets .....                           | 11 |
| Grooves .....  | 12 |
| KitCore Settings .....                                 | 16 |
| <br>   |    |
| <b>Chapter 4: Using KitCore in Your DAW</b> .....      | 17 |
| Pro Tools Example .....                                | 18 |
| Ableton Live Example .....                             | 21 |
| Digital Performer Example .....                        | 24 |
| Cubase Example .....                                   | 26 |
| Logic Example .....                                    | 28 |
| ACID Example .....                                     | 30 |
| Sonar Example .....                                    | 32 |



# Chapter 1: Introduction

Congratulations on your purchase of KitCore™! Powered by Submersible Music's DrumCore® technology, KitCore is a virtual instrument plug-in that is the ideal solution for anyone who needs a professional MIDI drum module in their AU, RTAS, or VST host. Use KitCore as an integrated rhythm machine within your favorite digital audio workstation (DAW), such as Pro Tools®, Digital Performer®, Sonar®, Cubase®, Live®, or Logic®.

## KitCore features:

- The KitCore plug-in is available in AU, RTAS, and VST plug-in formats.
- KitCore provides an extensive library of MIDI drum loops, fills, and songs that can be searched, sorted, auditioned, imported into your favorite DAW.
- KitCore provides separate assignable audio output channels for each pad.
- KitCore provides individual volume, pan, and pitch control for each pad.
- Pad swapping lets you swap samples between kits. For example, you can use Matt Sorum's snare within John Bishop's kit.
- If you own DrumCore®, and it is installed on your computer, KitCore can use DrumCore's content, including any custom kits you may have created.

---

## System Requirements

You must have Administrator Access on your computer to install KitCore.

### Minimum Requirements for Windows

- Pentium® PIII or AMD Athlon® 800 MHz processor or faster
- 512MB RAM, 1 GB or more recommended
- 500 MB of available drive space for KitCore or 2.5 GB of available drive space for KitCore Deluxe (for content)
- DVD ROM Drive (for installing KitCore Deluxe)
- Windows XP or Vista
- 1024 X 768 minimum display resolution

### Minimum Requirements for Macintosh

- Apple® Macintosh® Power Mac® or PowerBook® G4 500 MHz or faster
- 512MB RAM, 1 GB or more recommended
- 500 MB of available drive space for KitCore or 2.5 GB of available drive space for KitCore Deluxe (for content)
- DVD ROM Drive (for installing KitCore Deluxe)
- Mac OS X (v10.3.x or later)
- 1024 X 768 minimum display resolution

---

## Register KitCore

You must register KitCore to receive your KitCore authorization code. Registered users can receive technical support by email or on Submersible's website ([www.submersible.com](http://www.submersible.com)). The initial response time for technical support inquiries is within 24 hours. Registered users will also receive periodic software update and upgrade notices. Register KitCore at [www.submersible.com](http://www.submersible.com).

---

## Conventions Used in This Guide

This guide observes the following conventions to indicate menu choices and key commands:

| Convention  | Action  |
|---|---|
| File > Import Files                                 | Choose Import Files from the File menu  |
| Ctrl+I on Windows or Command+I on Macintosh         | Hold down the Ctl key on Windows or the Command key on Macintosh and press the I key        |
| Ctrl-click on Windows or Command-click on Macintosh | Hold down the Ctl key on Windows or the Command key on Macintosh and click the mouse button |

The following symbols are used to highlight important information:



*User Tips are helpful hints for getting the most out of DrumCore.*



*Important Notices include information that could affect DrumCore's performance.*



*Shortcuts show you useful keyboard or mouse shortcuts.*



*Cross References point to related sections in the guide.*

# Chapter 2: Installation and Configuration

---

## Installing KitCore

KitCore requires at least 500 MB of available storage space for the download version of KitCore, and at least 2.5 GB of available storage space for KitCore Deluxe. If you own DrumCore and it is installed on your computer, KitCore can use DrumCore's content as well.

### Installing KitCore on Windows

To install KitCore:

- 1 Do one of the following:
  - For KitCore Deluxe, insert the KitCore installer disc into your computer's DVD drive.
  - For KitCore, download the KitCore installer to your desktop.
- 2 Double-click the installer icon.
- 3 Follow the on-screen instructions to install the KitCore plug-in and content.



*If you own DrumCore, and it is installed on your computer, you can choose to only install the KitCore plug-in and use the existing DrumCore content.*

- 4 When installation is complete, exit the KitCore installer.

KitCore installs the following:

- KitCore RTAS plug-in:
  - \\Program Files\Common Files\Digi-design\DAE\Plug-Ins\KitCore.dpm (if Pro Tools *is* installed)
  - or -
  - \\Program Files\Submersible\KitCore\Plug-Ins\RTAS (if Pro Tools *is not* installed)
- KitCore VST plug-in: \\Program Files\Submersible\KitCore\Plug-ins\
- KitCore User Guide: \\Program Files\Submersible\KitCore\
- KitCore Data: \\Program Files\Submersible\KitCore\

## Installing KitCore on Macintosh

To install KitCore:

- 1 Do one of the following:
  - For KitCore Deluxe, insert the KitCore installer disc into your computer's DVD drive.
  - For KitCore, download the KitCore installer to your desktop.
- 2 Double-click the installer icon.
- 3 Follow the on-screen instructions to install the KitCore plug-in and content.



*If you own DrumCore, and it is installed on your computer, you can choose to only install the KitCore plug-in and use the existing DrumCore content.*

- 4 When installation is complete, click Done quit the KitCore installer.

KitCore installs the following:

- KitCore Audio Units plug-in: /Library/Audio/Plug-Ins/Components/KitCore.component
- KitCore RTAS plug-in:
  - /Library/Application Support/DigitalDesign/Plug-Ins/KitCore.dpm (if Pro Tools is installed)
  - or -
  - If Pro Tools is not installed: /Library/Application Support/Submersible (if Pro Tools is not installed)
- KitCore VST plug-in: /Library/Audio/Plug-Ins/VST/KitCore.vst
- KitCore User Guide: /Applications/KitCore/KitCore.pdf
- KitCore Data: /Library/Application Support/Submersible/KitCore/KitCore Data/

---

## Authorizing KitCore

KitCore requires an authorization code in order to run. You must register your copy of KitCore in order to receive your KitCore authorization code.

To authorize KitCore:

- 1 Launch your AU, RTAS, or VST host application (such as Logic, Pro Tools, or Cubase).
- 2 Insert KitCore on a track in your DAW, you will be prompted to register KitCore.
- 3 Click OK. The Register KitCore dialog opens.
- 4 Enter your Name and Serial Number (your serial number is located on your KitCore Registration card).
- 5 Click the Generate Challenge Code button. A unique "challenge" code (a series of 28 lowercase letters) will be generated and displayed in the Challenge Code field.
- 6 Register KitCore at [www.submersiblemusic.com](http://www.submersiblemusic.com) by doing the following:
  - Click the hyper link to Submersible Music's secure website.
  - Your default Web browser will launch to KitCore's Product Registration page.
  - Your Name, Serial Number, and Challenge Code should be entered automatically. If not, type in your Name, Serial Number, and Challenge Code.
  - Enter your email address (your authorization code will be sent to this email address).
  - Click the Submit Registration button.



If you are unable to register KitCore using the DrumCore website, send an email to [register@submersiblemusic.com](mailto:register@submersiblemusic.com) with your Name, Serial Number, Challenge Code, and email address (your authorization code will be sent to this email address).



*You must register KitCore to receive your authorization code.*

**7** A unique “response” code (a series of 24 uppercase letters) will be emailed to you. However, until you receive your authorization code, click the 30-Day Demo button to use KitCore.



*KitCore is fully functional for the duration of the 30-day demo period. After 30 days you must enter your authorization code to continue using KitCore.*

**8** When you receive your response code, enter it in the Response Code field and click the Authorize button. You can access the Register KitCore dialog from the KitCore Settings tab in the KitCore Plugin window (see “KitCore Settings” on page 16).



# CHAPTER 3: Using KitCore

KitCore is a virtual instrument plug-in in AU, RTAS, and VST plug-in formats. KitCore provides multiple sampled drum kits of some of the best drummers in the business. Select the KitCore plug-in in your favorite AU, RTAS, or VST host application (such as Logic, Pro Tools, or Cubase), and use MIDI to play KitCore in your Digital Audio Workstation (DAW). KitCore uses the same standard General MIDI (GM) MIDI note mappings for all of its drum kits.



*Refer to the manufacturer's documentation for your DAW for information on how to configure and use virtual instrument plug-ins such as KitCore with your DAW.*

## KitCore Plug-in Window

To open the KitCore plug-in:

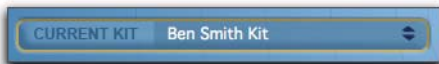
- 1 Launch your favorite DAW (such as Cubase or Pro Tools).
- 2 Insert the KitCore plug-in on a track. The KitCore Plug-in window opens.



*KitCore Plug-in window (Drums tab)*

To select a DrumKit:

- Select the desired Kit from the Current Kit pop-up menu.



Current Kit pop-up menu

KitCore loads the samples for the selected Kit into RAM, so, depending on the speed of your CPU and your RAM, this can take several seconds. As soon as you switch Kits, KitCore purges the previous kit from RAM and loads the new one.

KitCore indicates that a DrumKit is loading into RAM by a progress bar that appears in the Current Kit pop-up menu.



*It is recommended that you do not play KitCore while a new Kit is loading into RAM.*

## Playing KitCore

Since KitCore is a virtual instrument plug-in, you can play it within your DAW using sequenced MIDI data or in real-time by routing an external MIDI controller through your DAW to KitCore. KitCore uses the standard General MIDI (GM) note numbers for drum mapping.



*For more information about configuring MIDI, MIDI routing, and playing virtual instrument plug-ins in your DAW, consult the manufacturer's documentation.*

## KitCore Pads

The KitCore plug-in window displays the “pad” assignments for the selected kit as Pad Settings and Global Pad Settings.

There are two pages of pads:

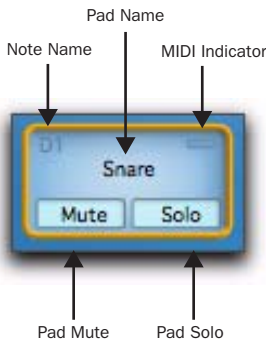
- Drums (MIDI note numbers 35-58)
- Percussion (MIDI note numbers 59-82).

Click either the Drums or Percussion tabs to display the corresponding set of Pads.



DrumKits window (Percussion tab)

Each Pad represents a specific drum or sound in the kit. Each Pad displays the note name that triggers the Pad, the Pad name, a MIDI indicator, and Mute and Solo buttons for the Pad. The MIDI indicator lights when it receives the corresponding MIDI note.



*DrumKit Pad*

To select an individual Pad:

- Click any Pad to select it.



*Depending on your DAW, you can use the Up, Down, Left, and Right Arrow keys to select the corresponding adjacent Pad.*

To play an individual Pad:

- Play any Pad by clicking it.
  - or -
- Play the corresponding MIDI note on your MIDI controller.
  - or -
- If a Pad is selected, press Ctrl+Spacebar on Windows, or Control+Spacebar on Macintosh.

The Pad's MIDI indicator lights when it receives MIDI.

To mute or unmute an individual Pad:

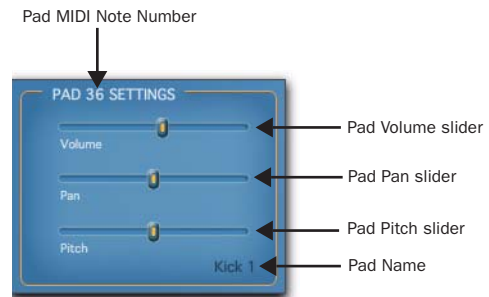
- Click the Pad's Mute button.

To solo or unsolo an individual Pad:

- Click the Pad's Solo button.

## Pad Settings

You can attenuate the volume, adjust the pan, and change the pitch of any selected Pad.



*Pad Settings*



*Changes to Pad Settings can be saved as plug-in presets in AU, RTAS, and VST formats.*

To adjust the volume of a Pad:

- 1 Select the desired Pad.
- 2 In the Pad Settings pane, move the Pad Volume slider to the left to lower the pad volume, or to the right to raise the pad volume.

To adjust the panning of a Pad:

- 1 Select the desired Pad.
- 2 In the Pad Settings pane, move the Pad Pan slider to the left to pan left, or to the right to pan right.

Panning to a stereo output pans between the left and right output channels. Panning to a mono output mixes between the left and right channels of stereo KitCore samples.

To change the pitch of a Pad:

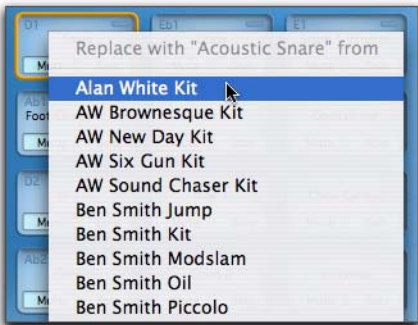
- 1 Select the desired Pad.
- 2 In the Pad Settings pane, move the Pad Pitch slider to the left to lower the pitch, or to the right to raise the pitch.

## Pad Swapping

You can quickly and easily swap pads between different Kits. For example, let's say you want to use Terry Bozzio's snare in one of Alan White's kits, simply right-click the snare pad in Alan White's kit and select Terry Bozzio's snare.

To swap a Pad from another Kit:

- 1 Select the Kit you want to start with.
- 2 Right-click the Pad you want to swap out.
- 3 From the Replace With pop-up menu, select the Kit whose pad you want to use.



Right-clicking a Pad to select from a different Kit.



On Mac, if you do not have a right-click mouse you can **Ctrl-click** any pad for the Replace With pop-up menu.

## Global Pad Settings

You can assign KitCore's drum pads to multiple unique audio output channels for independent mixing and audio processing in your DAW. KitCore provides 8 stereo output channels (1-2 through 15-16) and 24 mono output channels. Pad output assignments are applied by pad number across all kits. Also note that how KitCore's output channel assignment appear as inputs varies between different DAW applications.



Global Pad Settings



Changes to Pad Output Assignments can be saved as *plug-in presets* in AU, RTAS, and VST formats. See "Saving Kits as Presets" on page 11.

To assign KitCore to multiple outputs:

- 1 In the KitCore Plug-in window, enable the Assignable Outputs option in the Global Pad Settings pane.
- 2 Select the Pad whose output you want to assign.
- 3 From the Pad Output pop-up menu, select the desired output assignment (e.g., KC 17).
- 4 Repeat the preceding steps for each additional Pad as desired.

To assign KitCore outputs to channel inputs in your DAW:

- KitCore outputs are routed to audio inputs in your DAW according to how your DAW manages virtual instrument plug-ins with multiple outputs.



*Consult the manufacturer's documentation for your DAW for information on routing multiple outputs from an instrument plug-in to individual tracks in your DAW for mixing and processing.*

*For examples of routing KitCore outputs in different DAWs, see "Chapter 4: Using KitCore in Your DAW" on page 17.*

## Dynamics

KitCore provides VU Meters and a Volume slider to monitor and control the master volume. You can also adjust the amount of dynamic variation using the LiveDrummer slider.



*KitCore Volume and VU Meters*

## Volume

To adjust KitCore's Kit Volume:

- Move the Kit Volume slider to the right to boost the Kit volume.
  - or -
- Move the Kit Volume slider to the left to attenuate the Kit Volume.

## LiveDrummer

Whether you are programming your own MIDI drum patterns or using KitCore's MIDI grooves, you can use the LiveDrummer slider to add a little variety to the sound. The LiveDrummer slider affects both the velocities and the samples used for each event. For example, if you add a series of MIDI notes that are all at the same velocity to play a hi-hat pad, you can adjust the LiveDrummer slider to breathe a little life into it. Experiment with this setting to find just the right feel for your MIDI grooves and drum patterns.

---

## Saving Kits as Presets

Once you have edited KitCore's Pad Settings and Global Pad Settings, you will probably want to save your changes. Use your DAW's plug-in settings or plug-in presets feature to save the changes you have made. For information on how to save and manage plug-in presets in your DAW, consult the manufacturer's documentation.

## Grooves

When you install, KitCore, you not only get KitCore's sampled drum kits, you also get an extensive library of MIDI files, or "GrooveSets," that you can import into your DAW to play KitCore. GrooveSets logically group beats, fills, and variations of different drum patterns that work well together. The content reflects the featured drummer's musical sensibilities as they played these parts together as one song.

The Grooves tab in KitCore lets you sort, filter, and audition KitCore GrooveSets. When you find the groove you want, you can drag and drop it right into your DAW for further editing and arranging. Use any combination of KitCore's extensive library of MIDI drum patterns and edit them in your DAW to get the perfect drum track for any project. Once KitCore's grooves are in your DAW, you can use them to play KitCore any of the MIDI editing, and audio mixing and processing capabilities that your DAW provides.



KitCore Grooves

## Drummers and Styles

The Drummer and Styles list lets you sort KitCore's GrooveSets either by drummer or style.

To organize grooves by Drummer:

- 1 Click the Drummers button in the Grooves page.
- 2 Click the Reveal Grooves triangle for the drummer you want to show KitCore's selection of GrooveSets sorted by the selected drummer.



Drummer list

- 3 Select the grooves category you want to view the MIDI Grooves in the Grooves List (see "Loops and Fills" on page 13).



To organize grooves by Style:

- 1 Click the Styles button in the Grooves page.
- 2 Click the Reveal Grooves triangle for the style you want to show the GrooveSets available by the selected style.



*Styles list*

- 3 Select the grooves category you want to view the MIDI Grooves in the Grooves List (see “Loops and Fills” on page 13).

## Loops and Fills

Once you have selected the groove category you want in the Drummers or Styles List, you can filter the Grooves list to view only loops, only fills, or both loops and fills.

Select any groove in the list to view its metadata, audition it, or drag and drop it into your DAW.

To show both Loops and Fills:

- 1 Click the Loops button so that it is highlighted.
- 2 Click the Fills button so that it is also highlighted.



*Grooves list, Loops and Fills*

To show only Loops:

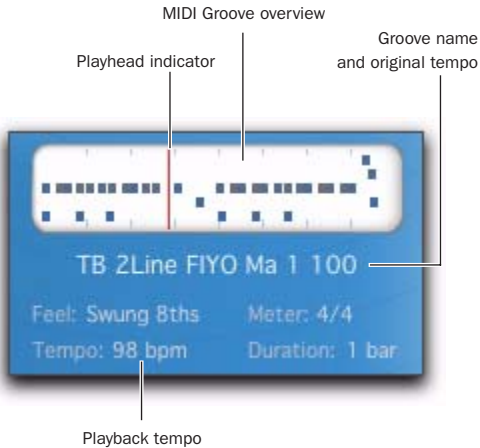
- 1 Click the Loops button so that it is highlighted.
- 2 Click the Fills button so that it is *not* highlighted.

To show only Fills:

- 1 Click the Fills button so that it is highlighted.
- 2 Click the Loops button so that it is *not* highlighted.

## Groove Metadata

When a groove is selected in the Grooves list, the metadata for that groove is displayed along with an overview of the pattern.



### *Groove overview and metadata*

**MIDI Groove Overview** Provides a visual representation of the MIDI drum pattern.

**Playhead Indicator** indicates the playhead location in the MIDI Groove overview when auditioning a groove.

**Groove Name and Original Tempo** Displays the name of the groove and its original tempo (in BPM).

**Feel** Displays the rhythmic feel of the groove.

**Meter** Displays the meter of the groove.

**Tempo** Displays the current playback tempo as set in your DAW.

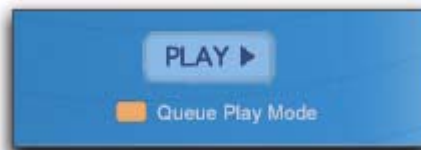
**Duration** Displays the duration of the groove in bars.

## Auditioning Grooves

You can audition any of KitCore's grooves before importing them into your DAW.

### To audition a groove:

- 1 Select the groove you want to audition in the Grooves list.
- 2 Click the Play button. The groove plays the Current Kit at the current playback tempo as set in your DAW.



### *Groove audition controls*

- 3 Select other grooves in the Grooves list to audition them.
- 4 Click the Stop button to stop auditioning the selected groove.



### *Groove audition controls*

### Queue Play Mode

The Queue Play Mode toggle enables (or disables) Queue Play Mode. When Queue Play Mode is enabled, you can select a second groove to start playback as soon as the currently selected groove finishes playing. When Queue Play Mode is disabled, any newly selected groove begins playing immediately, cutting off playback of the previously selected groove.

## Filtering Grooves

You can filter grooves shown in the Grooves list by feel. This can help you find the right groove with the right rhythmic feel quickly and easily.

To filter what grooves are shown in the Grooves list:

- 1 Click the Show pop-up menu and select the rhythmic feel you want.



*Groove filter pop-up menu*

Only groove with the matching Feel metadata are shown in the Grooves list. Select All to show all grooves regardless of feel.

## Exporting MIDI Grooves to Your DAW

KitCore makes it easy to export grooves from KitCore to your DAW. Once you have located the groove you want, simply drag and drop it to your DAW. Once you have imported a KitCore groove into your DAW, you can edit it and arrange it as you like and use that MIDI data to play KitCore's Drum Kits.

To export a groove from KitCore to your DAW:

- 1 Select the groove you want to export in the Grooves list.
- 2 Click and drag the groove from the Grooves list or from the MIDI Groove overview to your DAW.

---

## KitCore Settings

The KitCore Settings tab in the KitCore Plug-in lets you select whether to use the KitCore or DrumCore Data location (if DrumCore is installed), and provides access to information about KitCore and KitCore registration.



*KitCore Settings*

To select the KitCore or DrumCore Data location for use with KitCore:

- 1 Select the Settings tab. By default, the Use KitCore Default Data Folder option is enabled.
- 2 If DrumCore is installed on your computer, you can select the Use DrumCore Data Folder option.

To register KitCore:

- 1 Select the Settings tab.
- 2 Click the Register button.
- 3 In the Register KitCore dialog, enter your Name and Serial Number if necessary.
- 4 Click the Generate Challenge Code button.
- 5 Click the link to register at [www.submersible-music.com](http://www.submersible-music.com).
- 6 Enter the response code you receive from [www.submersible-music.com](http://www.submersible-music.com) into the Response Code field in the Register KitCore dialog.
- 7 Click Authorize.

# CHAPTER 4: Using KitCore in Your DAW

Every Digital Audio Workstation (DAW) is a little different in how it manages virtual instrument plug-ins—including how MIDI is routed to the plug-in and how audio is routed from the plug-in through the DAW's mixer. For the most accurate and up to date information on using virtual instrument plug-ins, like KitCore, consult the documentation for your DAW. However, this section does provide a few examples: using KitCore with Pro Tools, Ableton Live, Digital Performer, Cubase, Logic, Acid, and Sonar.

# Pro Tools Example

Figure 1 shows an example of a Pro Tools session with KitCore inserted on an Instrument track, and with the Kick, Snare, High-Hat, and Ride Cymbal Pads assigned to separate outputs for individual mixing and processing on separate Auxiliary Input tracks.



Figure 1. Example of a Pro Tools session with different KitCore Pads assigned to different outputs

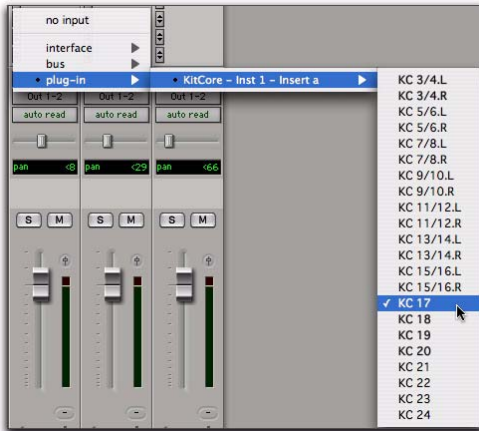
## Configuring Pro Tools to Monitor Multiple Outs from KitCore

To route KitCore outputs to multiple Pro Tools tracks for independent mixing and processing:

- 1 Create a new stereo Instrument track.
- 2 Insert the KitCore RTAS plug-in on that track.
- 3 In the KitCore plug-in window, assign different pads to different KitCore output channels (see “Global Pad Settings” on page 10).

For example, select the Kick 1 pad and assign it to KitCore Output “Mono 17,” the snare pads to “Mono 18,” and the high hat pads to “Mono 19.”

- 4 In Pro Tools, create 3 new mono Auxiliary Input tracks.
- 5 For the first new Auxiliary Input track, select Plug-in > KitCore > KC 17 from the track’s Input selector.



- 6 Set the remaining Auxiliary Input tracks to KC 18 and KC 19 respectively.

You can now mix and process outputs 17, 18, and 19 from KitCore independently using mix automation and plug-ins on the Auxiliary Input tracks.



*To play the KitCore plug-in in Pro Tools, import KitCore MIDI content into your Pro Tools session (see “Exporting Grooves from KitCore to Pro Tools” below), play your external MIDI controller, or create your own MIDI drum sequence.*

## Exporting Grooves from KitCore to Pro Tools

You can drag a groove from KitCore and drop it to the Pro Tools Timeline, an existing Instrument or MIDI track, or to the Region List.

To export a groove from KitCore to Pro Tools:

- 1 Select the groove you want to export in the Grooves list.
- 2 Click and drag the groove from the Grooves list or from the MIDI Groove overview to the Instrument track on which Kit Core is inserted (see Figure 2 on page 20).

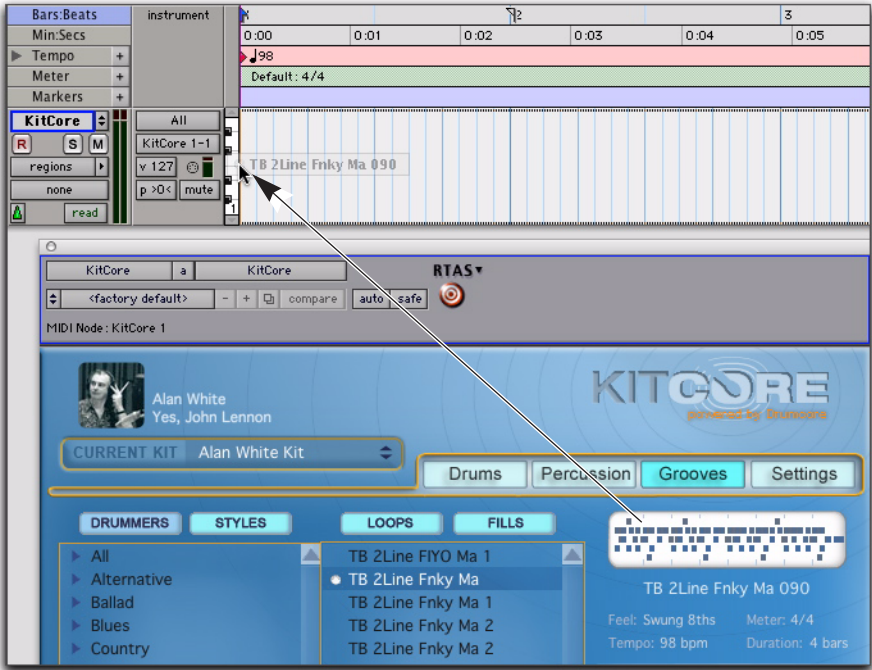


Figure 2. Dragging and dropping a KitCore groove to a Pro Tools Instrument track



# Ableton Live Example

Figure 3 shows an example of a Live set with KitCore inserted on a MIDI track, and with the Kick, Snare, and High-Hat Pads assigned to separate outputs for individual mixing and processing on separate audio tracks.



Figure 3. Example of a Live set with different KitCore Pads assigned to different outputs

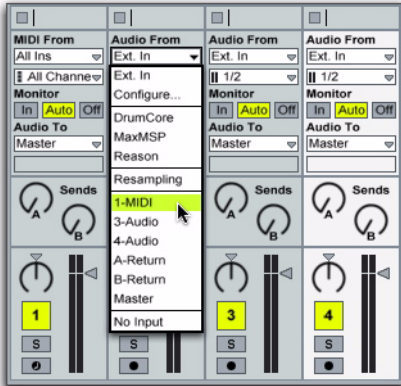
## Configuring Live to Monitor Multiple Outs from KitCore

To route KitCore outputs to multiple audio tracks in Live for independent mixing and processing:

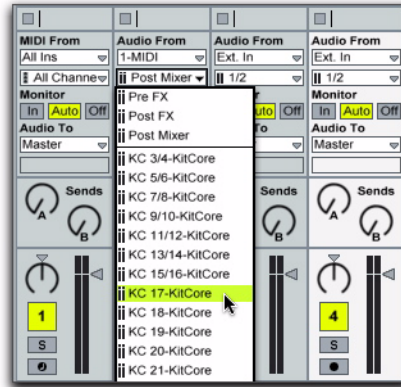
- 1 In your Live set, create a new MIDI track.
- 2 Drag and drop the KitCore plug-in from the Plug-in Device Browser to the MIDI track.
- 3 In the KitCore plug-in window, assign different pads to different KitCore output channels (see “Global Pad Settings” on page 10).

For example, select the Kick 1 pad and assign it to KitCore Output “Mono 17,” the snare pads to “Mono 18,” and the high hat pads to “Mono 19.”

- 4 In Live, create 3 new audio tracks.
- 5 For the first new audio track, select Audio From > 1-MIDI.



- 6 From the track's Input Channel selector, select KC 17-KitCore.



- 7 Set the remaining audio track inputs to KC 18-KitCore and KC 19-KitCore respectively.

You can now mix and process outputs 17, 18, and 19 from KitCore independently using mix automation and plug-ins on the audio tracks.



To play the KitCore plug-in in Live, import KitCore MIDI content into your Live set (see “Exporting Grooves from KitCore to Live” on page 23), play your external MIDI controller, or create your own MIDI drum sequence.

## Exporting Grooves from KitCore to Live

You can drag a groove from KitCore and drop it to a MIDI track.

To export a groove from KitCore to Live:

- 1 Select the groove you want to export in the Grooves list.
- 2 Click and drag the groove from the Grooves list or from the MIDI Groove overview to the MIDI track for KitCore (see Figure 4 below).



Figure 4. Dragging and dropping a KitCore groove to a Clip in Live

## Digital Performer Example

Figure 5 shows an example of a Digital Performer Project playing the KitCore AU plug-in.

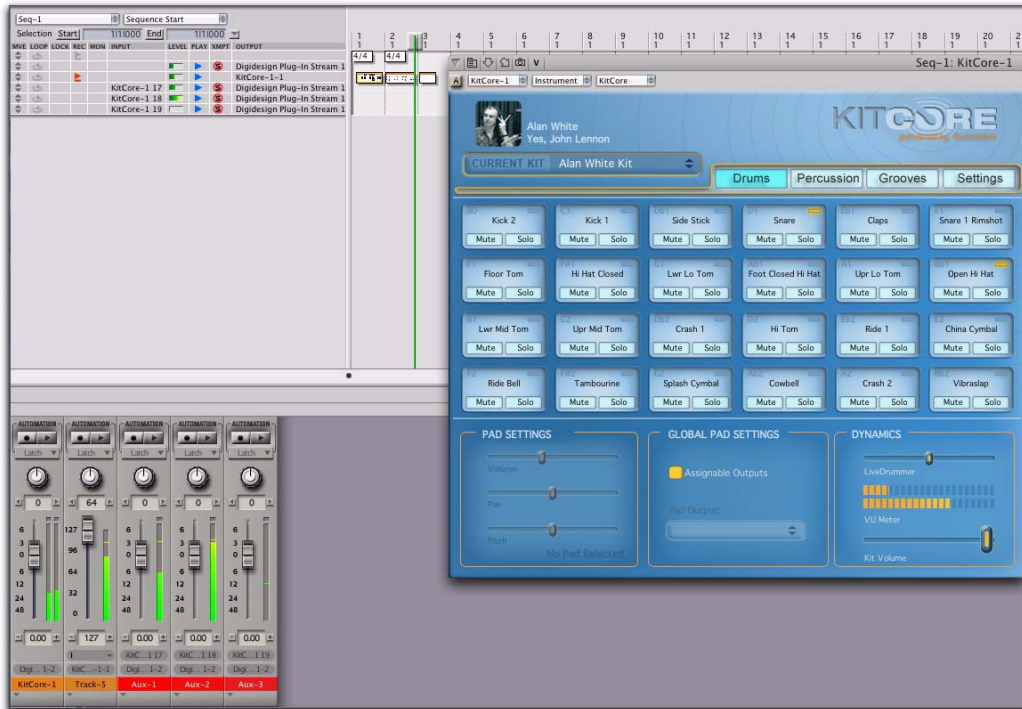


Figure 5. Example of a Digital Performer project playing KitCore

## Configuring Digital Performer to Monitor Multiple Outs from KitCore

To route KitCore outputs to multiple Aux tracks in Digital Performer for independent mixing and processing:

- 1 In your Digital Performer Project, create a new Instrument track with KitCore by selecting Project > Add Track > Instrument Track > Submersible Music: KitCore (mono or stereo).
- 2 Create a new MIDI track by selecting Project > Add Track > MIDI Track.

- 3 From the MIDI track's Output menu, select KitCore-1-1.

- 4 Import KitCore MIDI content to the MIDI track (see "Exporting Grooves from KitCore to Digital Performer" on page 25), play your external MIDI controller, or create your own MIDI drum sequence to play KitCore in Digital Performer.

- 5 In the KitCore plug-in window, you can assign different pads to different KitCore output channels (see "Global Pad Settings" on page 10).

For example, select the Kick 1 pad and assign it to KitCore Output “Mono 17,” the snare pads to “Mono 18,” and the high hat pads to “Mono 19.”

**6** In Digital Performer, create a new Aux track by selecting Project > New Track > Aux Track.

**7** From the Aux track’s Input menu, select New Mono Bundle > KitCore-1 17. (You may need to configure this in the Bundles window first.)

**8** Repeat steps 5 through 7 to route additional KitCore outputs to separate Aux tracks for mixing and processing.

You can now mix and process outputs 17, 18, and 19 from KitCore independently using mix automation and plug-ins on the Aux tracks.



*To play the KitCore plug-in in Digital Performer, import KitCore MIDI content into your Digital Performer project (see “Exporting Grooves from KitCore to Digital Performer” below), play your external MIDI controller, or create your own MIDI drum sequence.*

## Exporting Grooves from KitCore to Digital Performer

You can drag a groove from KitCore and drop it to a MIDI track.

To export a groove from KitCore to Digital Performer:

- 1** Select the groove you want to export in the Grooves list.
- 2** Click and drag the groove from the Grooves list or from the MIDI Groove overview to the MIDI track for KitCore (see Figure 6 below).

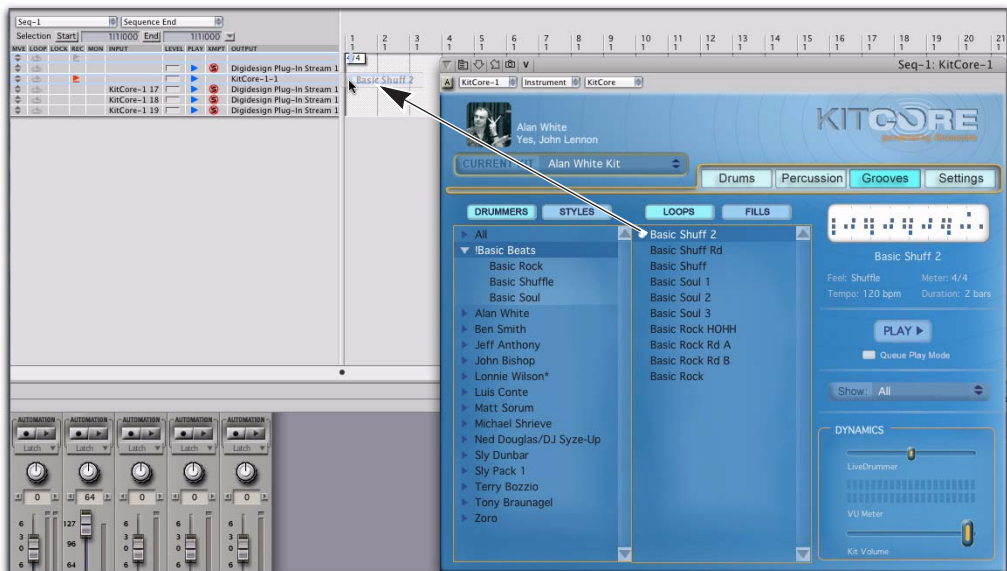


Figure 6. Dragging and dropping a KitCore groove to MIDI Track in Digital Performer

## Cubase Example

Figure 7 shows an example of a Cubase Project with a MIDI track playing the VST Instrument KitCore on an Instrument track.

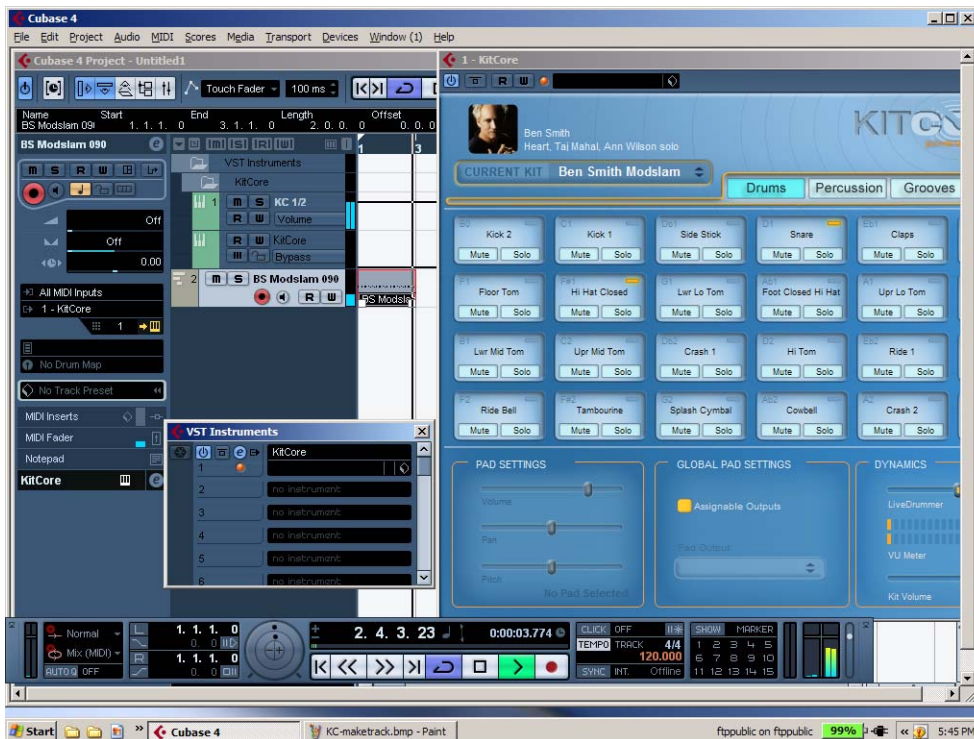
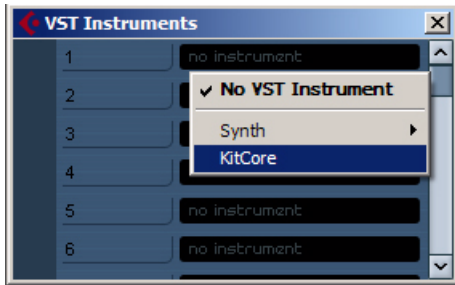


Figure 7. Example of a Cubase Project playing KitCore

## Configuring Cubase with KitCore

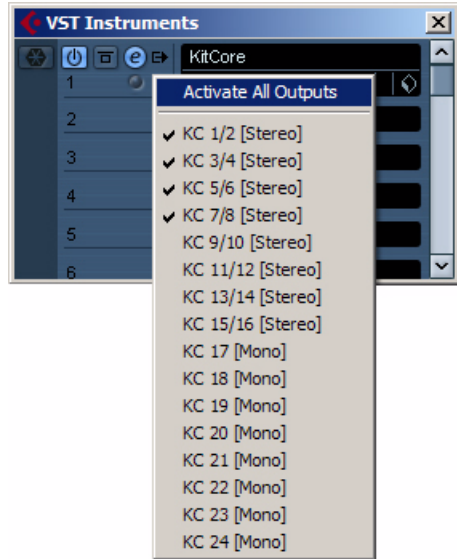
To play KitCore in your Cubase Project:

- 1 Create a new Instrument track by going to the Devices menu and selecting VST Instruments.
- 2 In the VST Instruments window, select KitCore as the VST Instrument.



- 3 When prompted to create a new MIDI track assigned to KitCore, click Create.
- 4 Import KitCore MIDI content to the new MIDI track (see "Exporting MIDI Grooves to Your DAW" on page 15), play your external MIDI controller, or create your own MIDI drum sequence to play KitCore in Cubase.

- 5 Choose the Output Activation list for KitCore in the VST Instruments rack and select however many separate outputs you want to use. This will create multiple audio tracks in Cubase.



- 6 Assign the outputs for pads in KitCore that correspond to each audio track in Cubase accordingly (see Figure 8 below).



Figure 8. Assigning the Snare pad output to Stereo 3-4 to play through the corresponding audio track in Cubase

## Logic Example

Figure 9 shows an example of a Logic Song with KitCore inserted on an Instrument track.

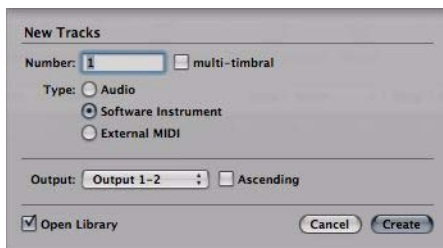


Figure 9. Example of KitCore in Logic

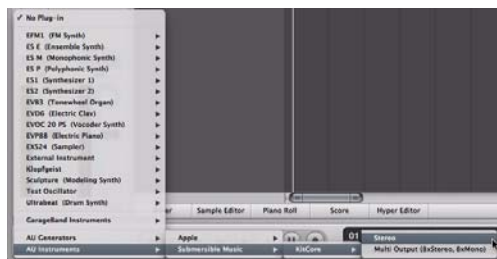
## Configuring Logic with KitCore

To play KitCore in Logic:

- 1 Create a new Instrument track in Logic by selecting New from the Track menu.
- 2 Select Software Instrument for the Type and click Create.



- 3 Insert KitCore on the Instrument track as a stereo plug-in. The KitCore plug-in window opens.



*Inserting KitCore as a stereo instrument plug-in*

- 4 Import KitCore MIDI content to the Instrument track (see "Exporting MIDI Grooves to Your DAW" on page 15), play your external MIDI controller, or create your own MIDI drum sequence to play KitCore in Logic.



## Configuring Logic to Monitor Multiple Outs from KitCore

To route KitCore outputs to multiple Aux tracks in Logic for independent mixing and processing:

**1** Insert KitCore on the Instrument track as a multichannel plug-in. The KitCore plug-in window opens.

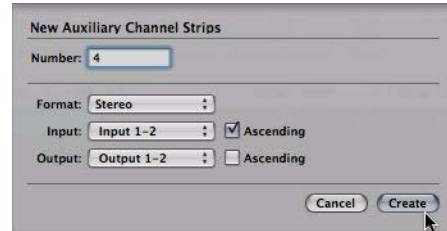


*Inserting KitCore as a multichannel instrument plug-in*

**2** Select Options > Create New Auxiliary Channel Strips in the Logic Mixer.



**3** Type the number for however many separate channels you want to mix from KitCore in Logic, set the Format (mono or stereo) and click Create.



**4** Assign the outputs for pads in KitCore as desired.

**5** Set the Inputs for the Auxiliary Channel Strips to the desired KitCore outputs.



*Assigning KitCore outputs to Auxiliary Channel Strip inputs*

# ACID Example

Figure 10 shows an example of KitCore in Sony ACID Pro.

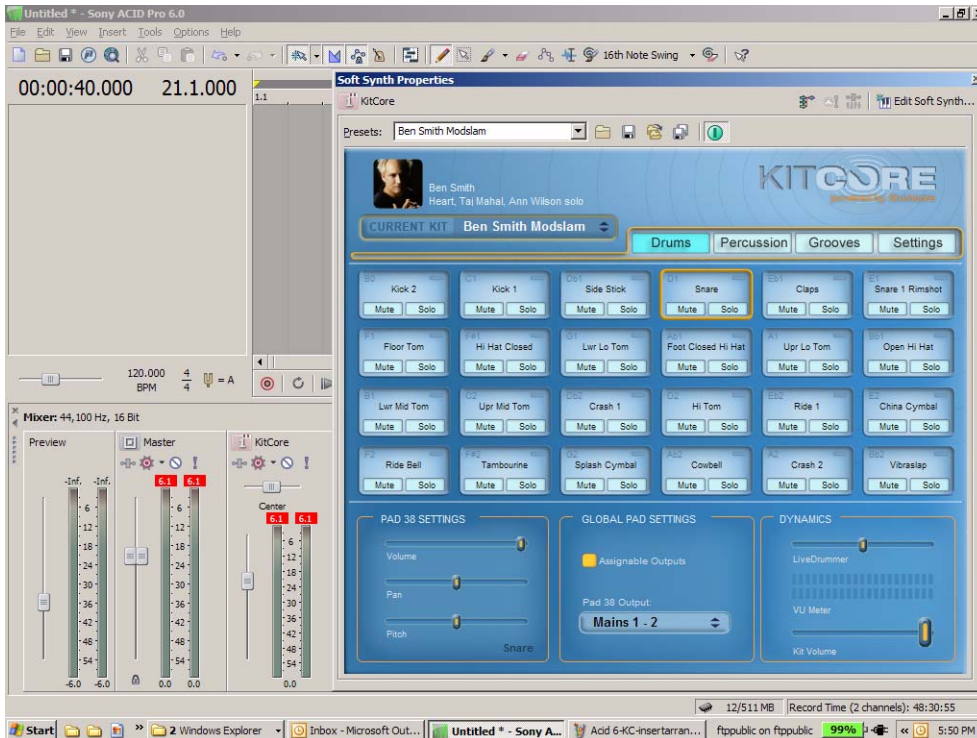


Figure 10. Example of KitCore in ACID

## Configuring ACID with KitCore

To play KitCore in ACID:

- 1 In ACID, select Soft Synth from the Insert menu.
- 2 In the resulting Soft Synth dialog, select KitCore and click OK.
- 3 Drag and drop grooves from KitCore to a MIDI track in ACID (see “Exporting MIDI Grooves to Your DAW” on page 15). You can also drag and drip KitCore grooves to a blank space in the project track area to create a track automatically.

4 Assign the MIDI track output the MIDI track to KitCore (see Figure 11 below).

You can also play KitCore by routing MIDI from your external MIDI controller through the MIDI track that is assigned to KitCore or by programming your own drum patterns on that MIDI track.

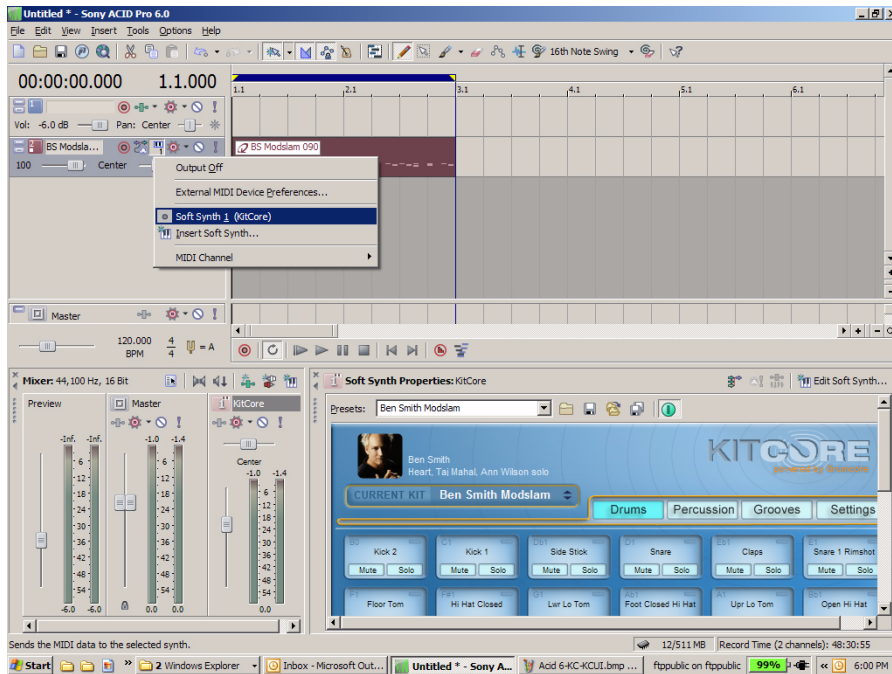


Figure 11. Assigning the MIDI track output to KitCore

## Sonar Example

Figure 12 shows an example of Sonar with a MIDI track playing the VST Instrument KitCore on an Instrument track.

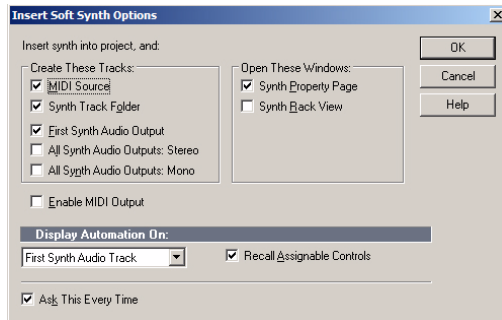


Figure 12. Example of a Sonar playing KitCore

## Configuring Sonar with KitCore

To play KitCore in Sonar:

- 1 In Sonar, select Insert > Soft Synth > vstplugins > KitCore.
- 2 In the Insert Soft Synth Options dialog, select the First Synth Audio Output option to use the main stereo outs from KitCore.



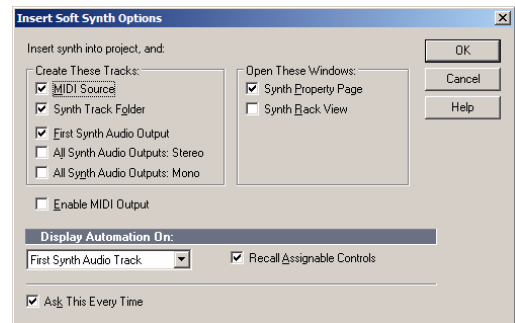
- 3 Click OK. Sonar creates both a new stereo audio track and a new MIDI track
- 4 Drag and drop grooves from KitCore to the MIDI track in Sonar that is assigned to KitCore (see “Exporting MIDI Grooves to Your DAW” on page 15).

You can also play KitCore by routing MIDI from your external MIDI controller through the MIDI track that is assigned to KitCore or by programming your own drum patterns on that MIDI track.

## Configuring Sonar to Monitor Multiple Outs from KitCore

To route KitCore outputs to multiple audio tracks in Sonar for independent mixing and processing:

- 1 In Sonar, select Insert > Soft Synth > vstplugins > KitCore.
- 2 In the Insert Soft Synth Options dialog, select either or both the All Synth Audio Outputs: Stereo and the All Synth Audio Outputs: Mono options to use multiple stereo and/or mono outs from KitCore.



- 3 Click OK. Sonar creates multiple new stereo and/or mono audio tracks, and a single new MIDI track.
- 4 Assign the outputs for pads in KitCore that corresponding to each audio track in Sonar accordingly (see Figure 13 on page 34).



Figure 13. Assigning the Snare pad output to Stereo 3-4 to play through the corresponding audio track in Sonar